

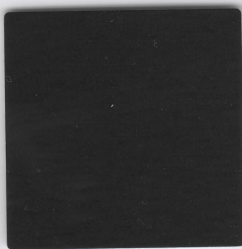


**COLOR KEY**

A5 .032": 5" GUTTER COIL 1-SIDE  
A6 .032": 6" GUTTER COIL 1-SIDE  
B5 .032": 5" GUTTER COIL 2-SIDE  
B6 .032": 6" GUTTER COIL 2-SIDE\*

C .019": 2" X 3" DOWNSPOUT COIL  
D .019": 3" X 4" DOWNSPOUT COIL  
E5 .027": 5" GUTTER COIL 1-SIDE  
E6 .027": 6" GUTTER COIL 1-SIDE

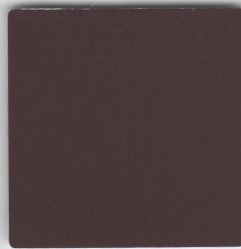
F5 .027": 5" GUTTER COIL 2-SIDE  
F6 .027": 6" GUTTER COIL 2-SIDE\*



**BLACK**  
A5 A6 C D E5 E6



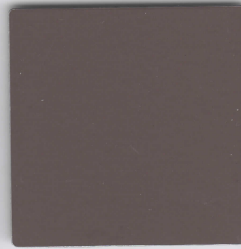
**MUSKET BROWN**  
A5 A6 C D E5 E6



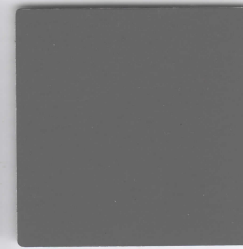
**ROYAL BROWN**  
A5 A6 C D E5 E6



**DARK BRONZE**  
A5 A6 C D E5 E6



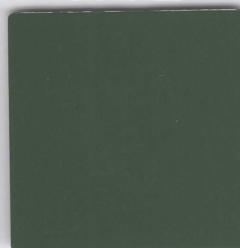
**LONDON BROWN**  
A5 A6 C D E5 E6



**CHARCOAL GREY**  
A5 A6 C D E5 E6



**TERRA BRONZE**  
A5 A6 C D E5 E6



**EVERGREEN**  
A5 A6 C D E5 E6



**RUSSET RED**  
A5 A6 C D E5 E6



**MONTANA SUEDE**  
A5 A6 C D E5 E6



**HARBOR GREY**  
B5 B6 F5 F6



**EVEREST**  
B5 B6 F5 F6



**SCOTTISH THISTLE**  
B5 B6 F5 F6



**PEBBLESTONE CLAY**  
A5 A6 C D E5 E6



**JEFFERSON TAN**  
A5 A6 C D E5 E6



**VICTORIAN GREY**  
A5 A6 C D E5 E6



**TUSCAN OLIVE**  
B5 B6 F5 F6



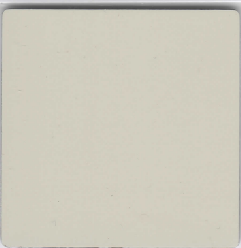
**WICKER**  
A5 A6 C D E5 E6



**SANDTONE**  
A5 A6 C D E5 E6



**DESERT SAND**  
A5 A6 C D E5 E6



**ALMOND**  
A5 A6 C D E5 E6



**CLASSIC CREAM**  
A5 A6 C D E5 E6



**LINEN**  
A5 A6 C D E5 E6



**CAMEO**  
A5 A6 C D E5 E6



**30° WHITE**  
A5 A6 C D E5 E6



**80° WHITE**  
A5 A6 C D E5 E6



**20-YEAR WARRANTY**

Covers materials and labor for 20 years following installation, and is transferable to the next owner. See our warranty for complete details.



**QUALITY PERFORMANCE**

ALUMALURE® 2000 is an exclusive combination of rust-inhibiting primers and an ultra-tough, low-mar topcoat applied in a two-coat process. It protects against the toughest corrosive elements and stays beautiful for years.



**COLOR COORDINATION**

26 standard colors that match or coordinate with Mastic products and most major cladding brands. Inorganic pigments mean colors stay true and last longer.



**ADDITIONAL COLORS AVAILABLE**

For select Mastic vinyl siding colors, an enhanced gutter coil and accessories color offering is available. Ask your sales representative for more details.

Due to printing limitations, please verify color with actual sample.  
\*Some colors require 10-day lead time and include limited accessories